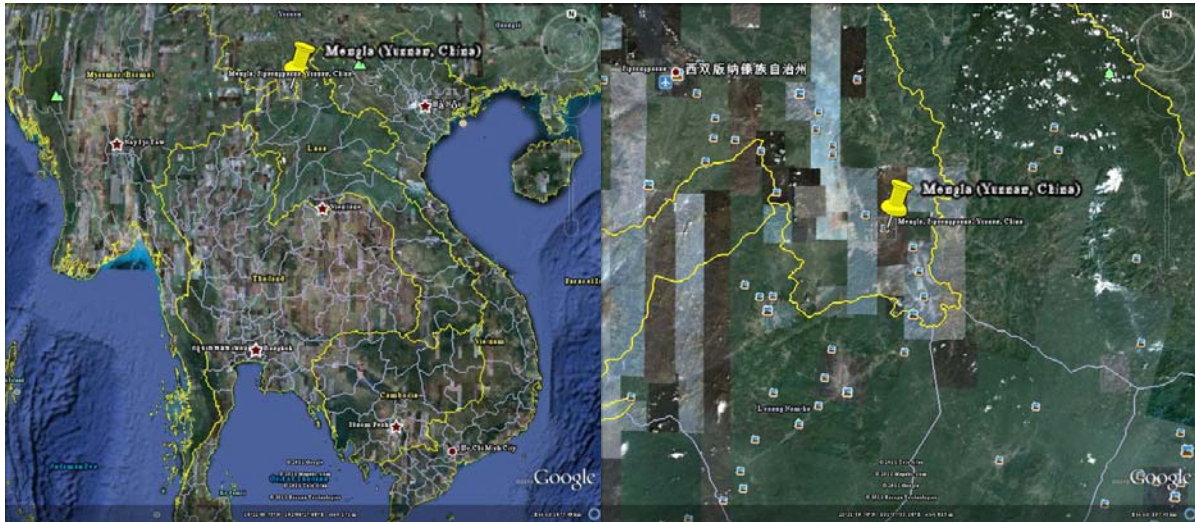


## Mengla Province (Yunnan, China)



### Geography

Mengla County is located in the southeast of Xishuangbanna Dai Minority People's Autonomous Prefecture, [Yunnan province, China](#) and borders on Laos. The nationalities living in Mengla include Han, Dai, Hani, Yao, Zhuang and Bulang.

Total Area - 7,056 km<sup>2</sup> (2,724.3 sq mi)

Total Population - 194,360

Source: [http://en.wikipedia.org/wiki/Mengla\\_County](http://en.wikipedia.org/wiki/Mengla_County)

<http://www.bannacits.com/Xishuangbanna%20Area/Brief%20Information/Mengla%20County.htm>

[http://news.bbc.co.uk/2/hi/africa/country\\_profiles/1287798.stm](http://news.bbc.co.uk/2/hi/africa/country_profiles/1287798.stm)

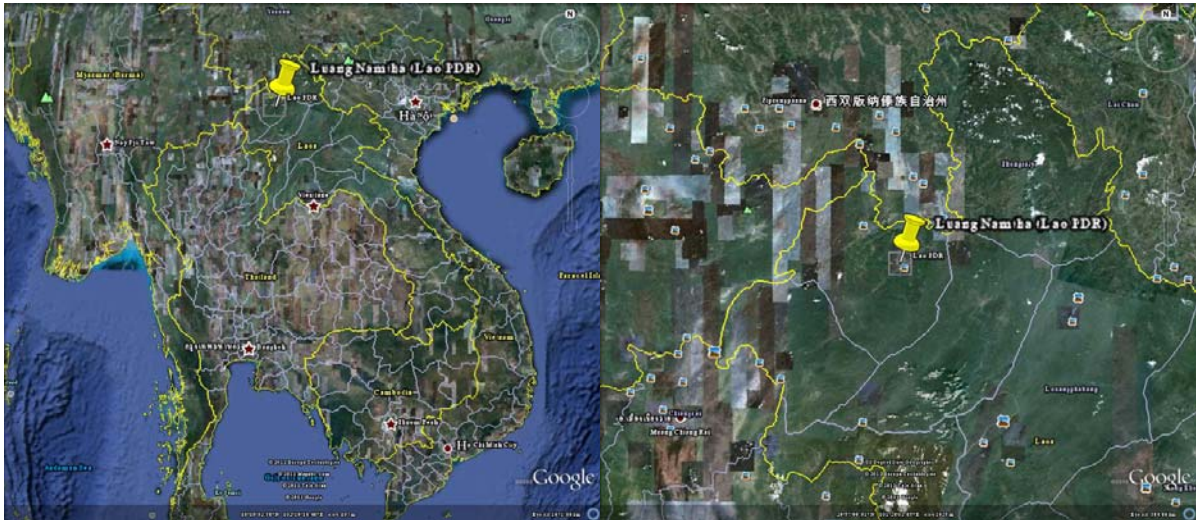
<http://www.fco.gov.uk/en/travel-and-living-abroad/travel-advice-by-country/country-profile/asia-oceania/china>

<http://www.who.int/countries/chn/en/>

<http://www.fco.gov.uk/en/travel-and-living-abroad/travel-advice-by-country/country-profile/asia-oceania/china?profile=geography>

[http://www.nationmaster.com/graph/hea\\_maj\\_inf\\_dis\\_foo\\_or\\_wat\\_dis-major-infectious-diseases-food-waterborne](http://www.nationmaster.com/graph/hea_maj_inf_dis_foo_or_wat_dis-major-infectious-diseases-food-waterborne)

## Luang Namtha Province (Lao PDR)



### Geography

Luang Namtha is both a [province](#) of [Laos](#) and the name of the provincial capital, located in the north of the country. From 1966 to 1976 it formed, together with [Bokeo](#), the province of [Houakhong](#). The province is bordered by the other Lao provinces [Bokeo](#) in the south-west, [Oudomxay](#) in the south-east, by [Myanmar](#) in the northwest and [China's Yunnan](#) province in the north-east with the border crossing at [Boten](#). The [Mekong](#) river (Nam Khong) constitutes the NW border of the province. Three large rivers drain westwards/southwards into the Mekong: [Nam Tha](#), [Nam Fa](#) and [Nam Long](#). One of the best preserved and most spectacular pristine [monsoon](#) forest of all Laos can be found in Louang Namtha.

Capital	- <a href="#">Luang Namtha</a>
Total Area	- 9,325 km <sup>2</sup> (3,600.4 sq mi)
Total Population (2004)	- 150,100

### Administrative Divisions

#### 1. [Long](#)

2. [Nale](#)
3. [Namtha](#)
4. [Sing](#)
5. [Viangphoukha](#)

Source: [http://en.wikipedia.org/wiki/Luang\\_Namtha\\_Province](http://en.wikipedia.org/wiki/Luang_Namtha_Province)

[http://news.bbc.co.uk/2/hi/europe/country\\_profiles/1154621.stm](http://news.bbc.co.uk/2/hi/europe/country_profiles/1154621.stm)

<http://www.fco.gov.uk/en/travel-and-living-abroad/travel-advice-by-country/country-profile/asia-oceania/laos>

<http://www.who.int/countries/lao/en/>

<http://www.fco.gov.uk/en/travel-and-living-abroad/travel-advice-by-country/country-profile/asia-oceania/laos?profile=geography>

[http://www.nationmaster.com/graph/hea\\_maj\\_inf\\_dis\\_foo\\_or\\_wat\\_dis-major-infectious-diseases-food-waterborne](http://www.nationmaster.com/graph/hea_maj_inf_dis_foo_or_wat_dis-major-infectious-diseases-food-waterborne)