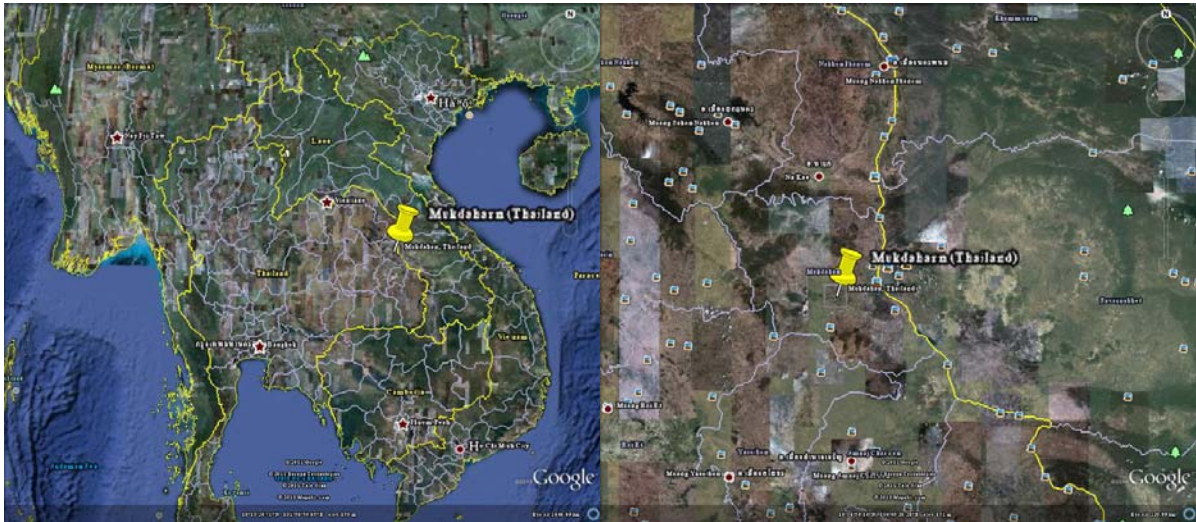


## Mukdaharn Province (Thailand)



### Geography

Mukdaharn is one of the [north-eastern provinces](#) of [Thailand](#). Neighboring provinces are (from south clockwise) [Amnat Charoen](#), [Yasothon](#), [Roi Et](#), [Kalasin](#), [Sakon Nakhon](#) and [Nakhon Phanom](#). To the east it borders the [Mekong River](#), across which lies [Savannakhet Province](#) of [Laos](#). The province is located in the [Mekong](#) valley. In the west of the province are the [Phu Phan mountains](#), which are covered with thick forests.

The city of Mukdaharn was founded in 1770 by Lord Chanthakinnaree of Phonsim. It was originally administrated from [Udon Thani](#), but in 1907 it became a district of [Nakhon Phanom Province](#). On September 27, 1982 Mukdaharn was upgraded to province status.

Capital - Mukdaharn town

Governor - Bunsong Techamanisathit (since October 2009)

Total Area - 4,339.8 km<sup>2</sup> (1,675.6 sq mi)

Total Population (2000) - 310,718

### Administrative Divisions

The province is subdivided into 7 districts. The districts are further subdivided into 53 subdistricts and 493 villages.

#### 1. Mueang Mukdaharn

2. Nikhom Kham Soi
3. Don Tan
4. Dong Luang
5. Khamcha-i
6. Wan Yai
7. Nong Sung

Source: [http://en.wikipedia.org/wiki/Mukdahan\\_Province](http://en.wikipedia.org/wiki/Mukdahan_Province)

[http://news.bbc.co.uk/2/hi/europe/country\\_profiles/1237845.stm](http://news.bbc.co.uk/2/hi/europe/country_profiles/1237845.stm)

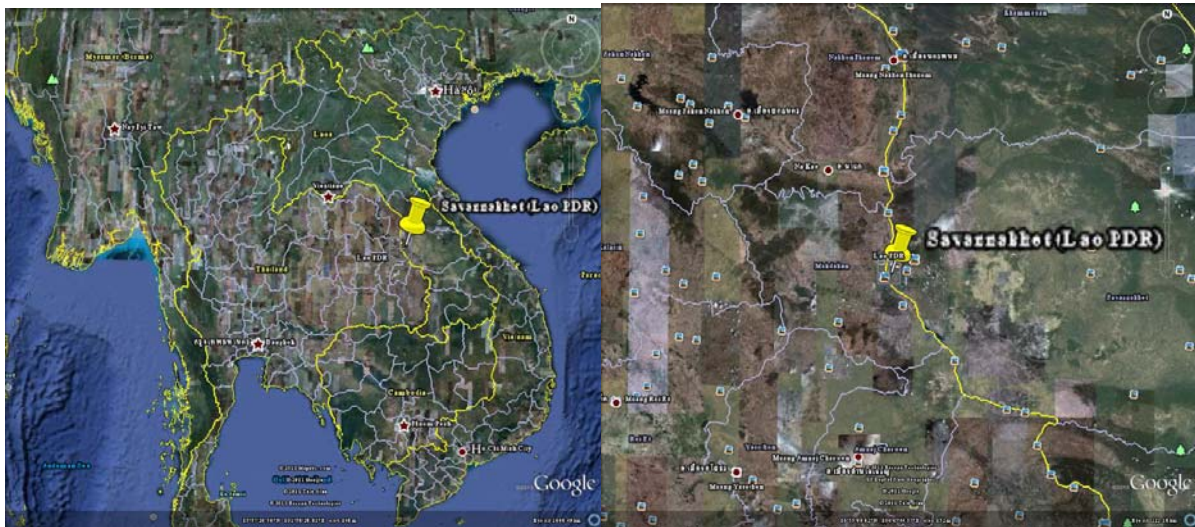
<http://www.who.int/countries/tha/en/>

<http://www.fco.gov.uk/en/travel-and-living-abroad/travel-advice-by-country/country-profile/asia-oceania/thailand>

<http://lcweb2.loc.gov/frd/cs/profiles/Thailand.pdf>

[http://www.nationmaster.com/graph/hea\\_maj\\_inf\\_dis\\_foo\\_or\\_wat\\_dis-major-infectious-diseases-food-waterborne](http://www.nationmaster.com/graph/hea_maj_inf_dis_foo_or_wat_dis-major-infectious-diseases-food-waterborne)

## Savannakhet Province (Lao PDR)



### Geography

Savannakhét is a province of [Laos](#). The name Savannakhet derives from Savanh Nakhone, which means "city of paradise", the province's original name. Therefore, it bears the same meaning as [Nakhon Sawan](#) in Thailand. This province is located in the south of the country.

It is bordered by [Khammouan](#) to the north, [Salavan](#) to the south, [Quang Tri](#) and [Thua Thien-Hue](#) of [Vietnam](#) to the east and [Nakhon Phanom](#) and [Mukdahan](#) of [Thailand](#) to the west. Savannakhet is the largest province in Laos, and with [Vientiane](#) constitutes the major urban areas. Its capital Savannakhet or [Kaysone Phomvihane](#) is Laos' second city after [Vientiane](#).

Capital	- Kaysone Phomvihane
Total Area	- 21,774 km <sup>2</sup> (8,407 sq mi)
Total Population (2004)	- 721,500
Administrative Divisions	

The province is made up of the following districts:

1. Atsaphangthong
2. Atsaphone
3. Champhone
4. Kaysone Phomvihane, former Khanthabouly
5. Nong
6. Outhoumphone
7. Phalanxay
8. Phine
9. Sepone
10. Songkhone
11. Thapangthong
12. Vilabuly
13. Xaybuly
14. Xayphouthong
15. Xonnabouly

Source: [http://en.wikipedia.org/wiki/Savannakhet\\_Province](http://en.wikipedia.org/wiki/Savannakhet_Province)

[http://news.bbc.co.uk/2/hi/europe/country\\_profiles/1154621.stm](http://news.bbc.co.uk/2/hi/europe/country_profiles/1154621.stm)

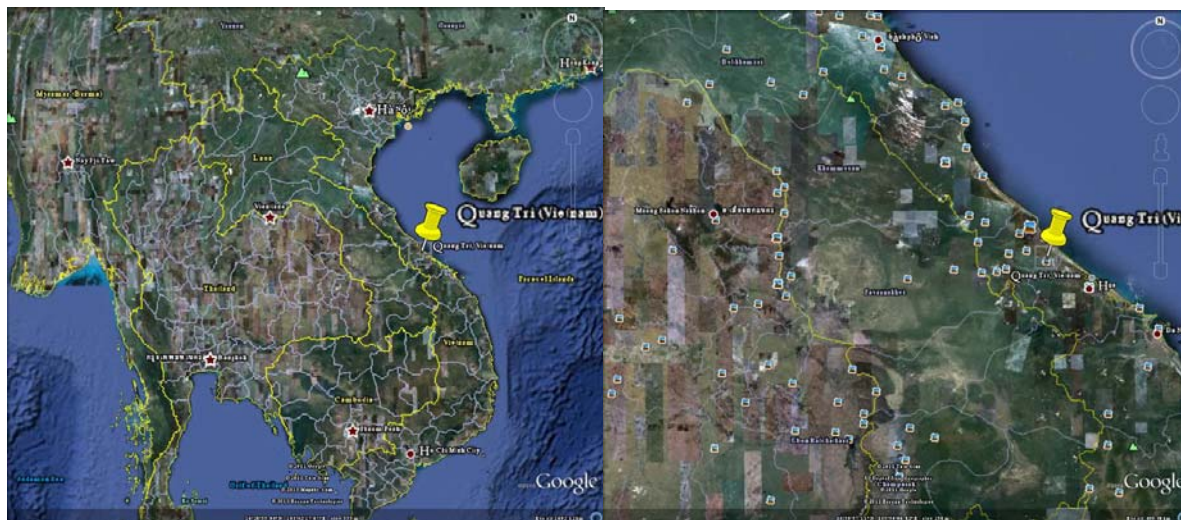
<http://www.who.int/countries/lao/en/>

<http://www.fco.gov.uk/en/travel-and-living-abroad/travel-advice-by-country/country-profile/asia-oceania/laos>

<http://www.fco.gov.uk/en/travel-and-living-abroad/travel-advice-by-country/country-profile/asia-oceania/laos?profile=geography>

[http://www.nationmaster.com/graph/hea\\_maj\\_inf\\_dis\\_foo\\_or\\_wat\\_dis-major-infectious-diseases-food-waterborne](http://www.nationmaster.com/graph/hea_maj_inf_dis_foo_or_wat_dis-major-infectious-diseases-food-waterborne)

## Quang Tri Province (Vietnam)



### Geography

Quảng Trị is a [province](#) on the [North Central Coast](#) of [Vietnam](#), north of the former royal capital of [Huế](#). Located in North Central Vietnam, Quang Tri Province is surrounded by Quang Binh Province on the north, Thua Thien-Hue Province on the south, [Savannakhet Province](#) of [Laos](#) on the west, and the East Sea on the east, with 75 kilometres (47 mi) of seaside.

Capital - Đông Hà

Total Area - 4,745.7 km<sup>2</sup> (1,832.3 sq mi)

Total Population (2004) - 616,600

### Administrative Divisions

Quảng Trị is divided into eight districts:

1. [Cam Lộ](#)
2. [Cồn Cỏ](#)
3. [Đa Krông](#)
4. [Gio Linh](#)
5. [Hải Lăng](#)



6. [Hướng Hóa](#)

7. [Triều Phong](#)

8. [Vĩnh Linh](#)

The city of [Đông Hà](#) and the town of [Quảng Trị](#) are also separate municipalities.

Source: [http://en.wikipedia.org/wiki/Qu%E1%BA%A3ng\\_Tr%E1%BB%8B\\_Province](http://en.wikipedia.org/wiki/Qu%E1%BA%A3ng_Tr%E1%BB%8B_Province)

[http://news.bbc.co.uk/2/hi/asia-pacific/country\\_profiles/1243338.stm](http://news.bbc.co.uk/2/hi/asia-pacific/country_profiles/1243338.stm)

<http://www.who.int/countries/vnm/en/>

<http://www.fco.gov.uk/en/travel-and-living-abroad/travel-advice-by-country/country-profile/asia-oceania/vietnam>

<http://www.fco.gov.uk/en/travel-and-living-abroad/travel-advice-by-country/country-profile/asia-oceania/vietnam?profile=geography>

[http://www.nationmaster.com/graph/hea\\_maj\\_inf\\_dis\\_foo\\_or\\_wat\\_dis-major-infectious-diseases-food-waterborne](http://www.nationmaster.com/graph/hea_maj_inf_dis_foo_or_wat_dis-major-infectious-diseases-food-waterborne)