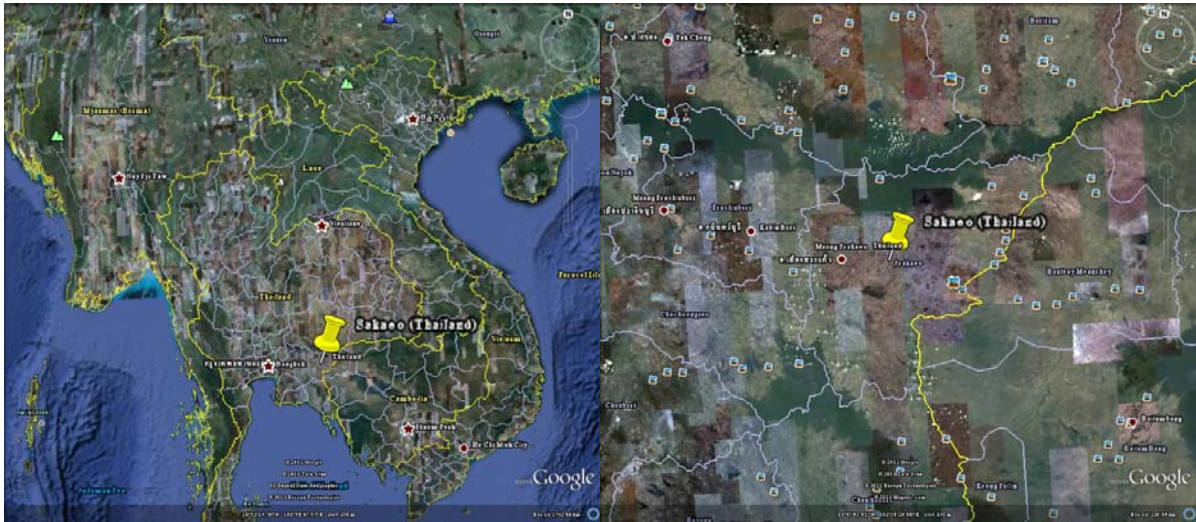


## Sakao Province (Thailand)



### Geography

It is located in the east of Thailand. Neighboring provinces are (from south clockwise) are [Chanthaburi](#), [Chachoengsao](#), [Prachin Buri](#), [Nakhon Ratchasima](#) and [Buri Ram](#). To the east it borders [Banteay Meanchey](#) and [Battambang](#) of Cambodia. Sa Kaeo became a province in 1993, when the six districts Sa Kaeo, Khlong Hat, Wang Nam Yen, Aranya Prathet, Ta Phraya and Watthana Nakhon of [Prachin Buri](#) were elevated to provincial status. The north of the province is covered with the forested mountains of the [Sankambeng Range](#), the southern prolongation of the [Dong Phraya Yen range](#). To the south are foothill plains, which are mostly [deforested](#).

- Capital - [Sa Kaeo town](#)
- Governor - Sanit Naksuksi (since 2008)
- Total Area - 7,195.1 km<sup>2</sup> (2,778 sq mi)
- Total Population (2000)- 485,632

## Administrative Divisions

Sa Kaeo is subdivided into 9 districts. The districts are further subdivided into 59 subdistricts and 619 villages.

1. Mueang Sa Kaeo
2. Khlong Hat
3. Ta Phraya
4. Wang Nam Yen
5. Watthana Nakhon
6. Aranyaprathet
7. Khao Chakan
8. Khok Sung
9. Wang Sombun

Source: [http://en.wikipedia.org/wiki/Sa\\_Kaeo\\_Province](http://en.wikipedia.org/wiki/Sa_Kaeo_Province)

[http://news.bbc.co.uk/2/hi/europe/country\\_profiles/1237845.stm](http://news.bbc.co.uk/2/hi/europe/country_profiles/1237845.stm)

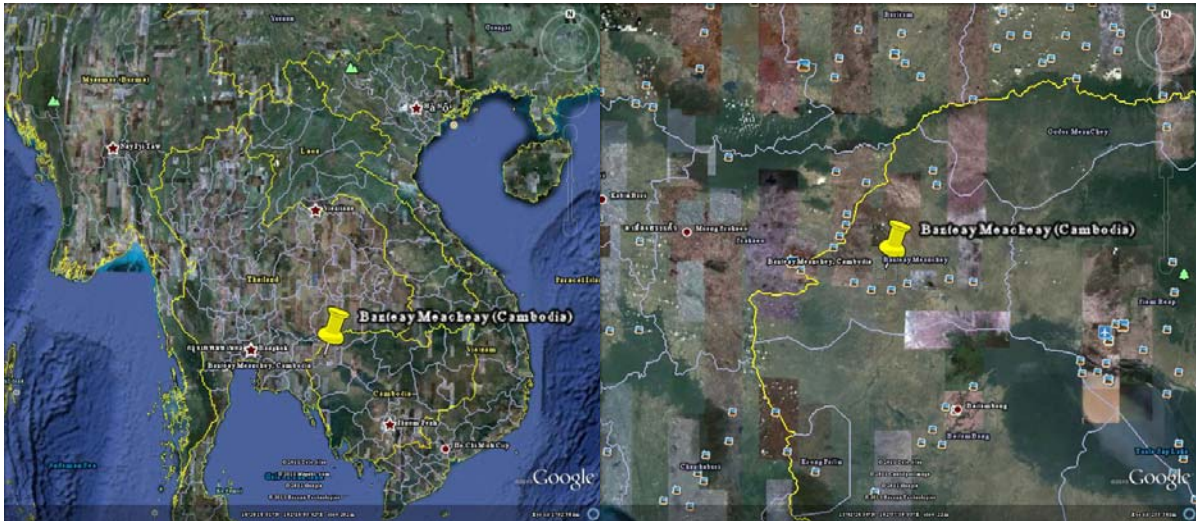
<http://www.who.int/countries/tha/en/>

<http://www.fco.gov.uk/en/travel-and-living-abroad/travel-advice-by-country/country-profile/asia-oceania/thailand>

<http://lcweb2.loc.gov/frd/cs/profiles/Thailand.pdf>

[http://www.nationmaster.com/graph/hea\\_maj\\_inf\\_dis\\_foo\\_or\\_wat\\_dis-major-infectious-diseases-food-waterborne](http://www.nationmaster.com/graph/hea_maj_inf_dis_foo_or_wat_dis-major-infectious-diseases-food-waterborne)

## Banteay Meacheay Province (Cambodia)



### Geography

Banteay Meanchey is a [Cambodian province](#). It is in the northwest of the country, and its capital is [Serei Saophan](#). The language is in Khmer. There is an international border crossing to [Thailand](#) located within the province in [Poipet](#) town.

Capital - [Serei Saophan](#)

Total Area - 6,679 km<sup>2</sup> (2,578.8 sq mi)

Total Population (2008)- 678,033

### Administrative Divisions

The province is subdivided into 8 districts, which are further subdivided in 64 communes and 634 villages.

1. Mongkol Borei
2. Phnom Srok
3. Preah Netr Preah
4. Ou Chrov

5. Serei Saophoan

6. Thma Puok

7. Svay Chek

8. Malai

Source: [http://en.wikipedia.org/wiki/Banteay\\_Meanchey\\_Province](http://en.wikipedia.org/wiki/Banteay_Meanchey_Province)

[http://news.bbc.co.uk/2/hi/europe/country\\_profiles/1243892.stm](http://news.bbc.co.uk/2/hi/europe/country_profiles/1243892.stm)

<http://www.who.int/countries/khm/en/>

<http://www.fco.gov.uk/en/travel-and-living-abroad/travel-advice-by-country/country-profile/asia-oceania/cambodia>

<http://www.fco.gov.uk/en/travel-and-living-abroad/travel-advice-by-country/country-profile/asia-oceania/cambodia?profile=geography>

[http://www.nationmaster.com/graph/hea\\_maj\\_inf\\_dis\\_foo\\_or\\_wat\\_dis-major-infectious-diseases-food-waterborne](http://www.nationmaster.com/graph/hea_maj_inf_dis_foo_or_wat_dis-major-infectious-diseases-food-waterborne)